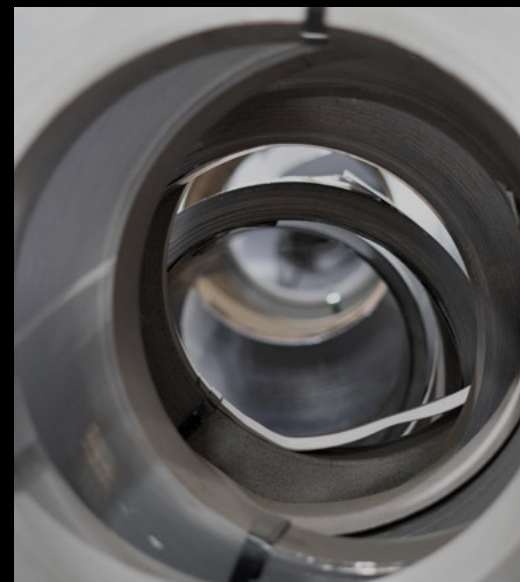
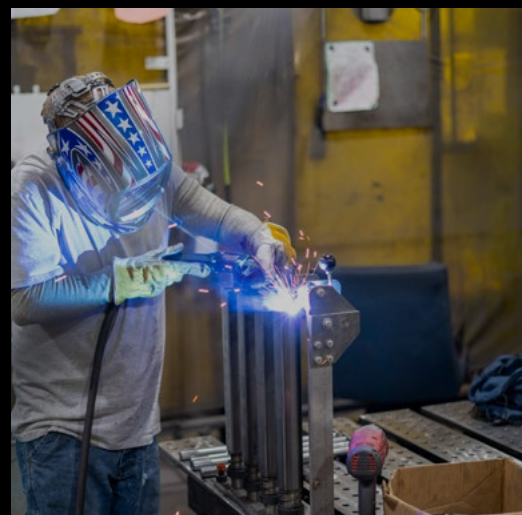




LOOKBOOK

LABORATORY FURNITURE





Building labs to catalyze discovery.





AMERICAN MADE - MANUFACTURE
STATESVILLE, NORTH CAROLINA

TABLE OF CONTENTS

PROJECT HIGHLIGHTS 4

FUME HOODS 30

WOOD CABINET STYLES 36

STEEL CABINET STYLES 38

KEMRESIN EPOXY RESIN 40

WORK TOPS 41

ADAPTABLE SYSTEMS

 ALPHA SYSTEM 42

 ENTERPRISE SYSTEM..... 46

 EVOLUTION SYSTEM..... 52

STAINLESS STEEL..... 56

SPEKTRUM LAMINATE..... 58

LAMINATE COLORS..... 60

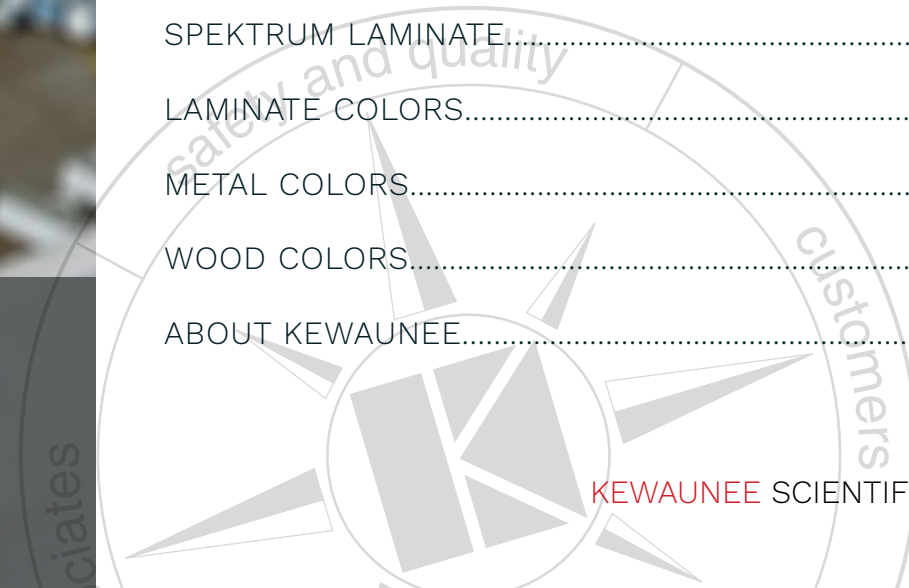
METAL COLORS..... 65

WOOD COLORS..... 66

ABOUT KEWAUNEE..... 68



TURED IN
ROLINA





VANDERBILT UNIVERSITY

CENTER FOR NEUROSCIENCE
DRUG DISCOVERY LAB

INSTALLED BY: NYCOM, INC.

This open space paired with wooden shelving and large work surfaces creates a warm atmosphere for the best and brightest of students to learn and grow. Cloud drop ceilings with perforated ceiling enclosure panels frame the space. In this university lab, the Enterprise shared frame bench system sits alongside maple full-overlay style casework. Research and experiments benefit from the use of durable acrylic pegboards and drying racks. The Supreme Air LV fume hood features flammable mobile cabinets next to horizontally mounted shelving.







J LABS

AT TEXAS MEDICAL CENTER

INSTALLED BY: HALLMARK CASEWORK

This Johnson and Johnson Innovation lab contains Alpha 6-inch paneled core system with floor mounted and suspended Research Collection inset style cabinets, Kemresin epoxy work surface, sinks, pegboard drying racks, and painted steel shelving. This lab also features Supreme Air fume hoods with specialty fume hood base cabinets and ceiling enclosure panels.



CITY OF HOPE NATIONAL MEDICAL CENTER

INSTALLED BY: ISEC, INC.

The layout of this room allows for individual work stations while maintaining a line of sight through the whole space to encourage collaboration. The Enterprise shared frame bench system with pre-wired electric outlets, pre-piped service fixtures, task lighting, and adjustable-height work surface frame is the ideal space to spend a day running tests or writing reports. Painted steel bench shelving with front seismic rods include top shelf pedestal mount seismic rods provide ample storage. Ceiling service panels, Signature Series full-overlay style fixed perimeter cabinets, and mobile work station cabinets support Kemresin epoxy work surface, drop-in sinks, and stainless steel pegboard drying racks.

BLOOMINGTON HIGH SCHOOL

INSTALLED BY: ISEC, INC.

This high school classroom incorporates Kewaunee's Research Collection wood fronted full-overlay style cabinets, framed glass wall, and tall storage cabinets. Students have the option to work at fixed height student work stations with Kemresin epoxy work surfaces and drop-in sinks. Quality details include steel body construction with wood flush overlay fronts and vertical grain matching fronts with clear bamboo finish.





LUTHERTON NORTHWESTERN HIGH SCHOOL

INSTALLED BY: FARNELL EQUIPMENT

The warmth of the Signature Series full-overlay style wood cabinets in this room is enhanced by the colorful pop of accessories in the room. Accompanied by Matrix student benches, framed glass wall cabinets, and solid door tall storage cabinets, the instructor and students have all the space they need to work and store equipment. With the instructor's bench and teacher desk assembly, the instructor can create the perfect environment to foster education. Kemresin epoxy work surface, sinks, and pegboard drying racks surround the learning space. The casework features include vertical grain matching wood fronts and high-quality select Grade A veneers.



RIVIER UNIVERSITY

INSTALLED BY: LAB FURNITURE
INSTALLATIONS AND SALES

Signature Series full-overlay style wood cabinets with several different student station arrangements, integral electric outlets, electric and data service pedestals, Kemresin epoxy work surface and sinks, pegboard drying racks, phenolic shelf reagent rack assemblies with integrated service fixtures and painted steel uprights and end service run enclosures, Supreme Air TruView and Venturi fume hoods with ceiling enclosures and Research Collection specialty cabinets below.





MILLIPORE

INSTALLED BY: LAB
FURNITURE INSTALLATIONS
AND SALES

This professional research laboratory finds its foundation with the Alpha 12-inch floor-mounted core system with integrated electrical enclosures and floor mounted Research Collection full-overlay style cabinets. Those utilizing the lab have access to durable Kemresin epoxy work surfaces, undermount sinks, and pegboard drying racks. Other highlights include painted steel shelving, sink area service umbilical pipe chase assembly, and Supreme Air fume hoods with Research Collection specialty cabinets.



UTD ENGINEERING BUILDING

INSTALLED BY: HALLMARK CASEWORK

Contrasts in colors and textures form an eye-catching and unique space. Aside from the aesthetics of this mixed media, it serves to separate the space into designated areas without diminishing the collaborative nature of the room. The concrete columns, bright green walls and stark white ceilings are complemented by Kewaunee's durable Kemresin epoxy work surfaces, painted steel shelves, and Research Collection inset-style base cabinets. Pre-piped service outlets and pre-wired outlets make for an attractive space and a talking point when recruiting researchers. This lab space features Venturi fume hoods.





UNIVERSITY OF CALIFORNIA RIVERSIDE

PIERCE HALL

INSTALLED BY: ISEC, INC.

Pierce Hall is one of the oldest buildings on UC Riverside's campus. After this renovation, the lab space looks fresh and is ready to recruit top faculty and students. Signature Series full-overlay, fixed sink cabinets and framed glass door tall storage cabinets serve as efficient storage. Kemresin epoxy work surface, drop-in sinks, and stainless steel pegboard drying racks stand ready to catalyze the next great discovery. The Venturi fume hood features straight lines, sleek appearance and rich options.

MIRAVISTA DIAGNOSTICS

INSTALLED BY: LAB INTERIORS GROUP

This Miravista Diagnostics lab comes equipped with Enterprise work benches with suspended and mobile inset cabinets with black epoxy resin tops, and steel shelves. It also features pre-wired power bars, flush door and drawer pulls, and levelers.



HUNTINGTON MEMORIAL RESEARCH INSTITUTE

INSTALLED BY: ISEC, INC.

This research institute utilizes an Edison bench system designed by Jacobs Consulting Inc. and includes pre-wired electric outlets, pre-piped service fixtures, and task lighting. Adjustable-height work surface frames and wood shelving with pedestal mount seismic rods make for a sleek and stylish workspace. Ceiling service panels keep wiring organized. Research Collection wood fronted full-overlay style mobile cabinets pair harmoniously with Kemresin epoxy work surfaces, drop-in sinks, stainless steel pegboard drying racks, and Supreme Air fume hoods with ceiling enclosure panels. Research Collection wood front with steel cabinet body nests below benches for adaptable storage.





UNC CHAPEL HILL

MARSICO HALL

INSTALLED BY: NYCOM, INC.

High-end custom wood is a highlight in this lab featuring Signature Series full-overlay style cabinets and high-grade wood. The wood is complemented by the colors and textures of the research collection specialty cabinets and painted steel shelving. The custom end umbilical with integral marker board is a unique feature in this lab. Wood adjustable-height tables with stainless steel legs are another example of mixed textures in this space. Suspended island shelf systems provide storage throughout the lab alongside research collection specialty cabinets. The painted metal service column houses electrical and plumbing while keeping the space looking functional and organized.



CENTRAL PIEDMONT COMMUNITY COLLEGE

NORTH CLASSROOM BUILDING

INSTALLED BY: NYCOM, INC.

This vibrant university classroom features the warmth of wood topped with sleek and durable Kemresin. Signature Series full-overlay style casework forms student desks and bookbag cubby cabinets. Sloped top glass front storage cabinets prevent clutter and promote safety. This space comes complete with Kemresin epoxy work surfaces and Supreme Air Venturi fume hoods with ceiling enclosures. Label holders on cabinets maximize organization and efficiency.

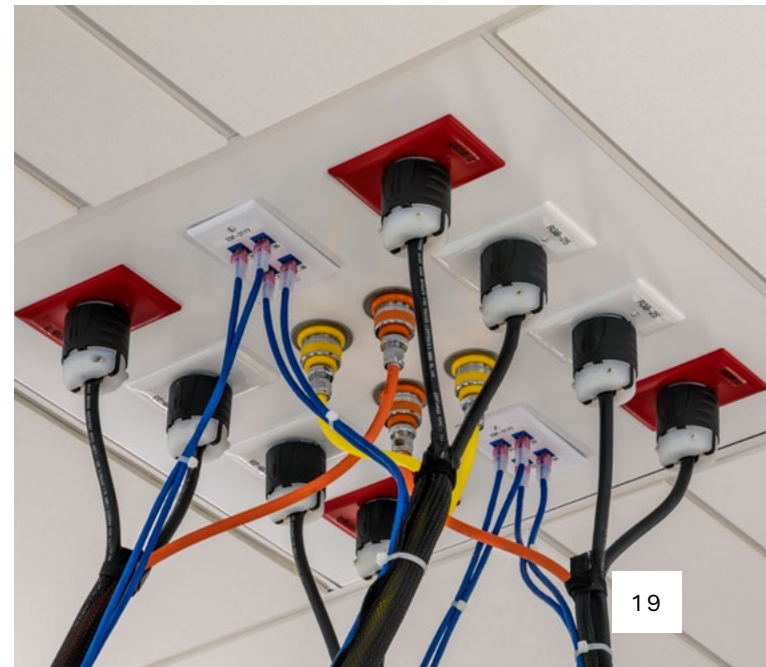




NOVEL THERAPEUTICS

INSTALLED BY: ISEC, INC.

This lab configuration empowers researchers to harmonize instruments and equipment while fostering a collaborative environment. These F57 Alpha carts with cantilevered adjustable-height work surface frame arrive with pre-piped and pre-wired service pedestals as well as ceiling service panels. Research Collection full overlay style painted steel mobile cabinets and Kemresin epoxy work surfaces, sinks and pegboard drying racks fit right into this lab.





THE OHIO STATE UNIVERSITY

ADVANCED MATERIALS CORRIDOR

INSTALLED BY: SUPERIOR LABORATORY SYSTEMS

Students and faculty in the OSU Advanced Materials Corridor make use of Enterprise shared frame bench system with pre-wired electric outlets, pre-piped service fixtures and adjustable-height work surface framing. Painted steel bench shelving with front seismic rods and top shelf raised front lips provide ample storage and surface area for ongoing work. Other features shown are the FE50 4-leg adjustable-height end and perimeter tables and suspended ceiling service panels. The casework includes Research Collection wood fronted full-overlay style mobile cabinets with heavy-duty grab bars and floor mounted cabinets that are topped with durable Kemresin epoxy work surface with stainless steel undermount sinks. The Venturi fume hoods come pre-piped and pre-wired with Research Collection specialty cabinets below.





SCHREIBER FOODS

INSTALLED BY: INNOVATIVE LABORATORY SYSTEMS

This bright and open space is primed for innovation and collaboration with a 12-inch Alpha Core system with electric and data pedestals. Featuring the research collection inset style suspended and fixed cabinets, cantilever work service frames, fixed end island sinks, and umbilical pipe chase, this commercial lab is the ideal workspace for the seasoned researcher or the up and coming graduate. Natural light from the windows illuminates Kemresin epoxy work surfaces with a marine edge at the sink, and pegboard drying racks. Strategically placed fume hoods are sleekly tucked into the background. These Supreme Air LV fume hoods feature a ceiling enclosure with access panels for easy maintenance.

UNC CHAPEL HILL

MURRAY HALL MAKERSPACE

INSTALLED BY: NYCOM, INC.

This lab is configured for research and collaboration. Crowned by a pre-wired and pre-piped custom overhead service carrier over an Alpha FC50 adjustable table, the room features Research Collection wood on steel mobile cabinets, Kemresin epoxy work surface, sink assembly, and pegboard drying racks. Researchers can make use of the floor-mounted and bench-mounted Supreme Air LV fume hoods.

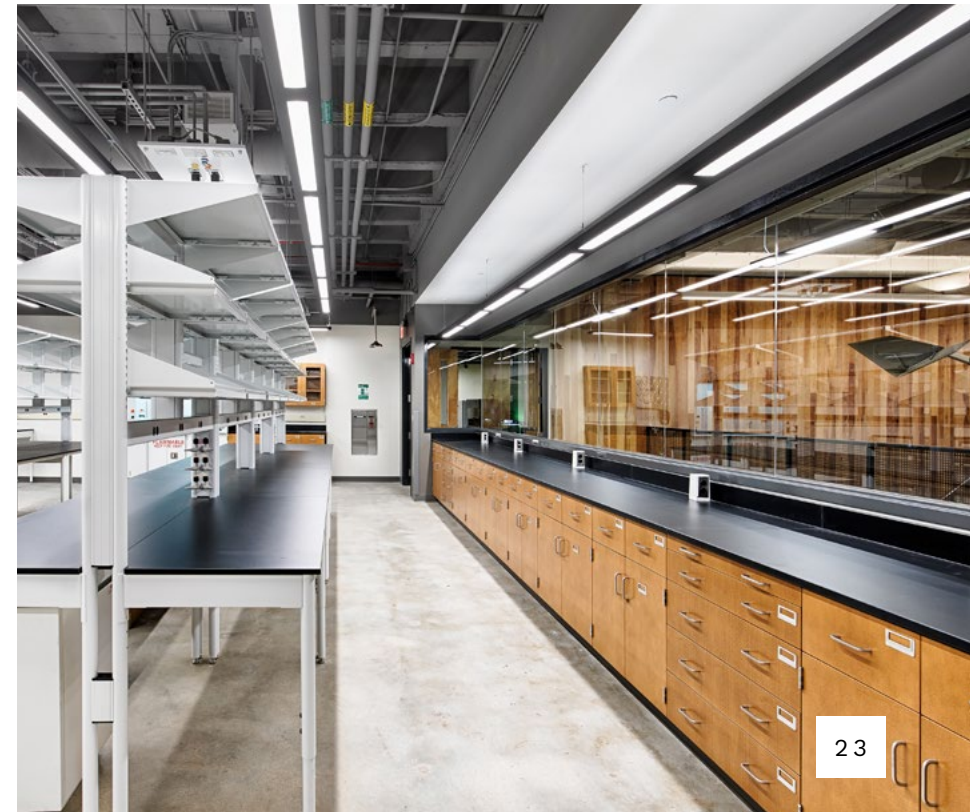


UNIVERSITY OF WEST GEORGIA

BIOLOGY BUILDING

INSTALLED BY: NYCOM, INC.

The black exposed ceilings and concrete floor of this laboratory space are warmed with wood furniture. This lab boasts the Signature Series full-overlay style wood cabinets and framed glass doors with walls and tall storage cabinets. Adjustable tables make the space more accessible and allow for ADA accommodations. Fixed wood student table systems work alongside nested ADA adjustable-height tables. The Enterprise shared frame bench system comes pre-piped and pre-plumbed. Umbilical pipe chase feeds services to the student island. Stainless steel pegboard drying rack accessories surround the workspace in the center of the room.





COE COLLEGE

PETERSON HALL OF SCIENCE

INSTALLED BY: INNOVATIVE LABORATORY
SYSTEMS

This reconfigured space was repurposed to improve functionality and promote interaction in the lab. The Signature Series full-overlay style wood casework is starkly contrasted with Kemresin epoxy countertops with sink assembly and pegboard drying racks. Work spaces are made up of a 6-inch Alpha Core system with cantilever adjustable-height work surface frames, suspended cabinets, and umbilical pipe chases. The perimeter of the room is made up of framed glass door wall cabinets and fume hoods with ADA options. Unique features to the room include integral electrical and plumbing outlets.



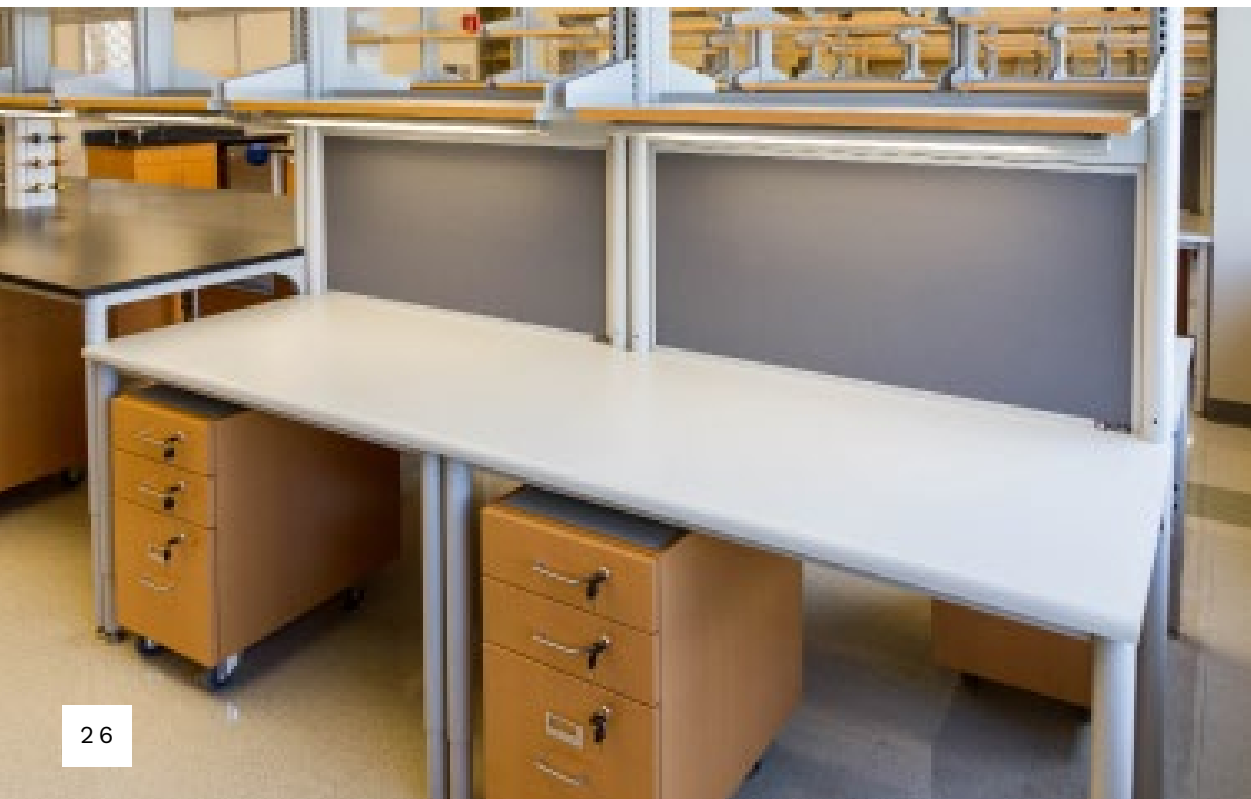




METHODIST RESEARCH INSTITUTE

INSTALLED BY: HALLMARK CASEWORK

Methodist Research Institute features enterprise shared frame bench system with pre-wired electric outlets, pre-piped service fixtures, chemical resistant laminate bench shelving with hardwood edge, task lights, adjustable height work surface frame, epoxy work surface and sinks, plastic laminate write-up station counters, perimeter sink stations with adjustable wall shelving and pegboard drying racks, Signature Series full-overlay style fixed and mobile cabinets, and ceiling service panels.



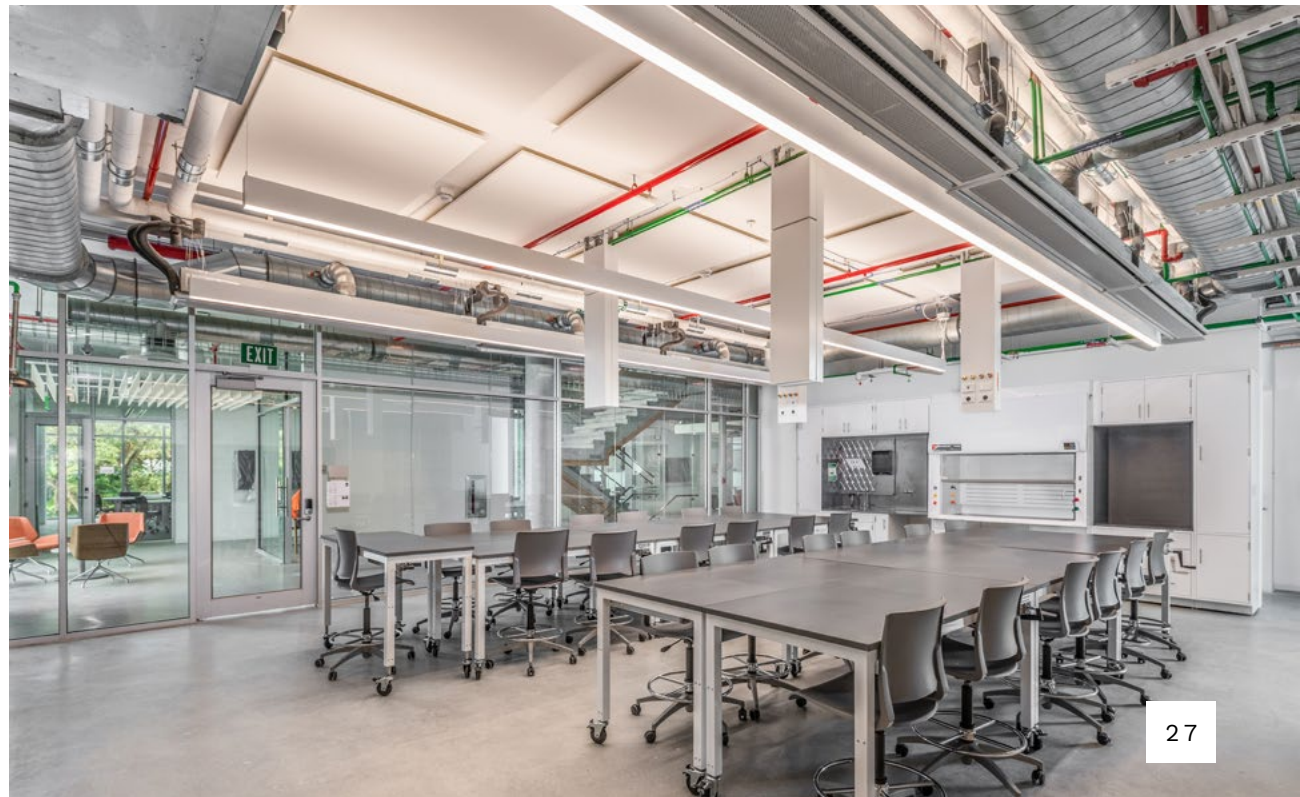


RANSOM EVERGLADES

STEM CENTER

INSTALLED BY: NYCOM, INC.

This private school's custom space starts with Research Collection inset-style cabinets and Kemresin epoxy work surfaces with a custom epoxy shelving unit. Ceiling service columns enhance the industrial look of the room. FC50 four leg adjustable-height tables stand alongside sinks and pegboards. Supreme Air fume hoods and pass through demonstration hoods utilize ceiling service columns.



CHEVRON KINGWOOD TECHNICAL RESEARCH CENTER

INSTALLED BY: HALLMARK CASEWORK

The bold colors in this research center create a dynamic and innovative space. This Alpha Column free standing system with Research Collection inset style mobile and fixed perimeter cabinets is paired with Kemresin epoxy work surface, and painted steel shelving. Other features include task lighting, post mounted vertical power utility chases, pipe chase end enclosures, and external field-piped services mounted to casework and bench columns. These Venturi bench and floor mounted fume hoods are complemented by specialty cabinets and ceiling enclosure panels.





CELULARITY

INSTALLED BY: KEWAUNEE

This Evolution 9-inch single-sided column on levelers and cantilevered adjustable-height work surface framing supports these Research Collection inset style suspended cabinets, painted steel shelving, and Kemresin epoxy work surfaces. Seen here are Kewaunee Interceptor Biological Safety Cabinets. Accessories include column mounted pre-piped integral service fixtures, pre-wired FV50 column mounted raceways, and ceiling service panels.



FUME HOODS

CONSISTENT SIGHT LINE BETWEEN ADA / NON ADA MODELS



GENERAL FEATURES

- >> LED interior lighting with 15 intensities and 3 color temperatures
- >> Large viewing height
- >> Unparalleled containment
- >> Low Exhaust Flow (LEV)/High Performance
- >> Energy Efficient
- >> Venturi post design improves corner airflow
- >> Electromechanical sash stop integrated into sash track (mechanical sash stop on floor mounted hoods)
- >> Flush airfoil for easy user access
- >> Easily removable, gasketed access panels
- >> Two GFCI protected duplex receptacles in each corner post fascia
- >> Room for five service fittings per fascia post
- >> Sash handle notched at each end for cord pass-through

PROPRIETARY BELT DRIVEN SASH

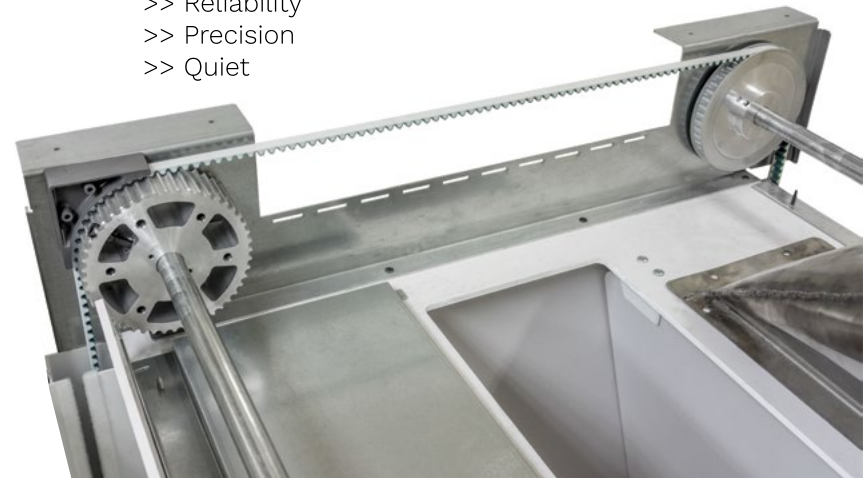
- >> Speed
- >> Reliability
- >> Precision
- >> Quiet



VENTURI

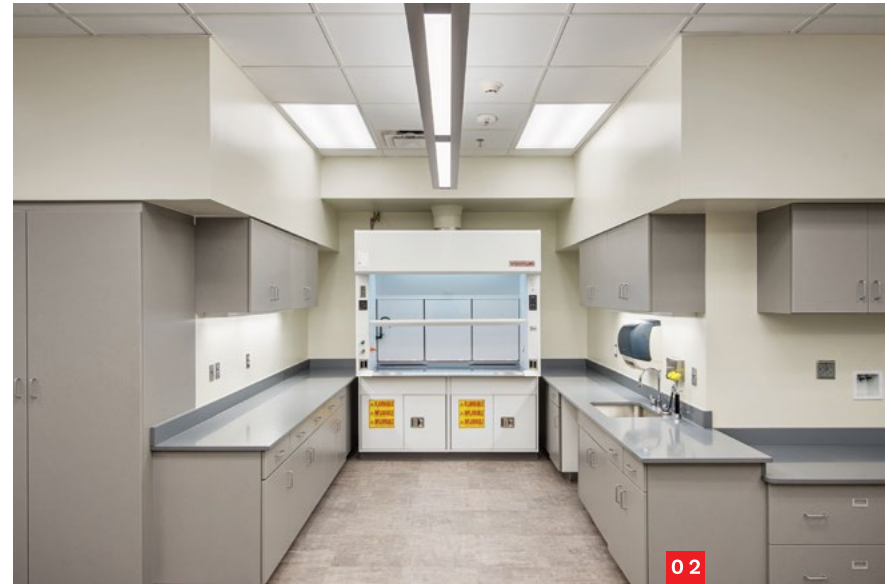
ENHANCED SAFETY

The Venturi port accelerates the airflow in the lower corners of the hood opening for improved containment.
per ANSI Z9.5- PATENT NO. 10,807,131





01



02



03



04

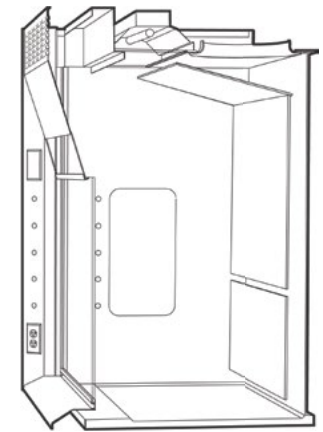
FUME HOOD CONFIGURATIONS:

- 01 Floor Mounted
- 02 Bench Mounted
- 03 ADA
- 04 Distillation

FUME HOOD TYPES:

- >> General Purpose
- >> Radioisotope
- >> Perchloric Acid
- >> Educational





01
115 years of laboratory furniture and equipment experience.

02
Supreme Air fume hoods with matching powder coated steel casework.

03
Venturi bench mounted ADA fume hoods with combination sash and mobile flammable storage cabinets.

04
TruView teaching fume hoods, steel casework.

05
Supreme Air fume hoods with flammable storage cabinets, external blower switches and modular tables.

06
Double-sided TruView teaching fume hoods, wood casework with black and slate Kemresin.

07
Venturi bench mounted fume hood with distillation rack, side-mounted pegboard with matching Kemresin grey sink/tops.







01

Perimeter Venturi fume hoods with steel casework, with black Kemerisin tops and sinks.

02

ADA bench mounted Venturi fume hoods, with acid and flammable storage cabinets and steel casework.

03

Venturi bench mounted fume hoods with combination sashes and steel casework.

04

Same height ADA and general Venturi fume hoods with acid and flammable steel cabinets.

05

Combination sash Venturi fume hoods with steel casework.

06

Black powder coated ADA and bench mounted Venturi fume hoods with matching steel casework.

07

Perimeter ADA and bench mounted Venturi fume hoods.



WOOD CABINET STYLES



CONTEMPORARY FULL OVERLAY

Square-edged full overlay doors and drawers with vertical matching grain. Available in oak, maple, or beech with a wide selection of pull options.

CONVENTIONAL RADIUS LIP
Conventional radius lip doors and drawers. Available in oak, maple, or beech with a wide selection of pull options.



SILHOUETTE

Radiused edge door and drawer fronts with an integral, recessed pull that is machined into the solid oak hardwood panels. Available in oak only.



HARDWARE

STEEL CABINET STYLES

Kewaunee's fully-welded, heavy-gauge, steel cabinets are designed to SEFA 8 performance standards and built to rigorous benchmarks. The Kewaunee classic "unit" design allows doors and drawers to be reconfigured in place. The configurable design provides a rich offering of hardware and aesthetic options.



OVERLAY - SQUARE EDGE

Doors and drawer heads overlay face of cabinet. Available with 5-knuckle, semi-concealed or concealed hinges and a wide selection of pulls.

INSET - SQUARE EDGE
Doors and drawer heads are flush with face of cabinet. Available with Positive Catch and a wide selection of pulls



OVERLAY - WOOD ON STEEL

Oak, maple, or beech veneer doors and drawer heads overlay face of cabinet. Available with 5-knuckle, semi-concealed or concealed hinges and a wide selection of pulls.



OVERLAY - BEVEL EDGE

Doors and drawer heads, with beveled top edge, overlay face of cabinet. Available with 5-knuckle, semi-concealed or concealed hinges and a wide selection of pulls.

FLUSH PULL
A rectangular, recessed pull available in overlay and inset steel cabinet styles.



KEMRESIN EPOXY

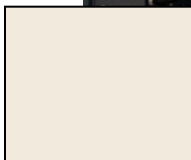
SEFA 3 PERFORMANCE STANDARDS



GREY



BLACK



PUTTY



SLATE



EPOXY RESIN:

Ultra smooth surface for enhanced

- >> Scratch resistance
- >> Chemical resistance
- >> Nonporous properties
- >> 1" and molded epoxy resin

FABRICATION:

- >> Flat Sheets
- >> Marine Edge
- >> Octagonal
- >> Under-mount, drop-in, and ADA
- >> Sinks in many sizes
- >> Drains

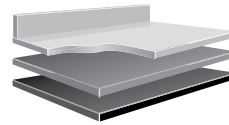
COUNTER TOPS



STAINLESS

TYPES:

- >> Epoxy resin
- >> Phenolic resin
- >> ESD laminate
- >> Stainless
- >> Hardwood
- >> Laminate



ESD LAMINATE

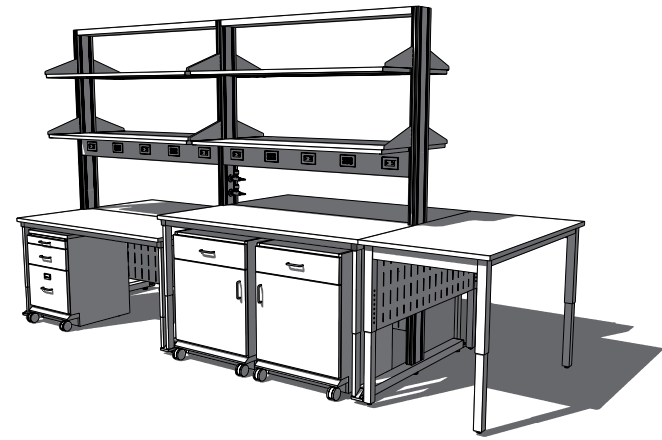
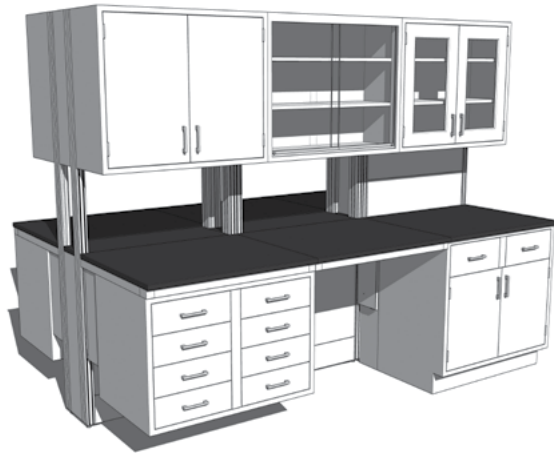


HARDWOOD



PHENOLIC

THE ALPHA SYSTEM



Features:

- >> Moveable, freestanding bench design integrates with other Alpha products.
- >> Support columns utilize Alpha's unique double-slotted design.
- >> Can create individual self-supported workstations, or be designed with a shared structural "column" for multiple workstation applications.
- >> Is available both double and single-sided for use as either center island or wall benches.
- >> Available with either 27" or 30" deep worksurfaces.
- >> Designed to integrate with mobile or floor mounted cabinetry.
- >> Work surfaces and shelving are adjustable in height on 1" increments.
- >> Integrated shelving system with shelves available in depths from 6" to 24".
- >> Columns can be pre-plumbed or pre-wired for both power and data for use with overhead service carriers or panels.



- >> SEFA 10, Adaptable Casework Systems
- >> Class 5 Wall Structures / Partitions
- >> Class 5 Mobile Standards
- >> Class 8 Cart Systems
- >> Class 7 Columns





01



02



04



05





03

01

Alpha Column free standing system with Research Collection full-overlay style suspended cabinets, phenolic work surface, and painted steel shelving. Accessories include pre-piped and pre-wired vertical utility chase.

02

Alpha counter mounted upper shelving system, with floor mounted Research Collection inset style cabinets, Kemresin epoxy work surface, and painted steel shelving. Accessories include vertical utility pedestals, sink service umbilical sink and pegboard drying rack.

03

Alpha counter mounted upper shelving system, with floor mounted Research Collection inset style cabinets, Kemresin epoxy work surface, and painted steel shelving. Accessories include vertical utility pedestals, end sink service, umbilical sink and pegboard drying rack.

04

Alpha 6" floor mounted core low-wall system with integral electrical outlets, floor mounted and mobile Research Collection full-overlay style cabinets with custom door and drawer pulls, Kemresin epoxy work surface, sinks, and pegboard drying racks.



06



07

05

Alpha 6" floor mounted core system, with floor mounted Research Collection Ensemble wood fronted full-overlay style cabinets, Kemresin epoxy work surface, and painted steel shelving with matching wood front shelf-lips. Accessories include vertical utility pedestals.

06

Alpha 12" floor mounted core system, with integral electrical outlets, Kemresin epoxy work surface and core ledge, and cantilevered adjustable height work surface support framing.

07

Alpha counter mounted upper shelving system, with floor mounted Research Collection inset style cabinets, Kemresin epoxy work surface, painted steel shelving, and phenolic write-up station splash guards. Accessories include vertical utility pedestals and center service column.

THE ENTERPRISE SYSTEM



FEATURES:

- >> Overhead shelving is adjustable on 1" increments
- >> Self-supporting workstations
- >> Counter support structure
- >> Single and double sided
- >> Adjustable height worksurfaces
- >> Integrated shelving system
- >> Pre-plumbed integrated services
- >> Pre-wired integrated power and data



- >> SEFA 10 Adaptable Casework Systems,
- >> Class 7 standards





01

Enterprise shared frame bench system with pre-wired electric outlets, pre-piped service fixtures, adjustable-height Kemresin epoxy work surface, painted steel bench shelving with painted steel shelf lips, Research Collection wood on steel full-overlay style suspended cabinets, Enterprise column to ceiling cord chase extensions.

02

Enterprise shared frame bench system with pre-wired electric outlets, pre-piped service fixtures, adjustable-height Kemresin epoxy work surface, wood bench shelving with pedestal type seismic rods, Research Collection inset style mobile cabinets, and ceiling service panels.

03

Enterprise shared frame bench system with pre-wired electric outlets, horizontal mounted pre-piped service fixtures, adjustable-height Kemresin epoxy work surface, painted steel bench shelving with front seismic rods, Research Collection full-overlay style mobile cabinets, ceiling service panels, and FE50 4-leg adjustable height end tables.

04

Enterprise shared frame bench system with pre-wired electric outlets, adjustable wood bench shelving, adjustable-height work surface frame, Kemresin epoxy work surfaces, Signature Series full-overlay style mobile cabinets, and ceiling service panels.





03



04



05

Enterprise shared frame bench system with pre-wired electric outlets, pre-piped service fixtures, adjustable height Kemresin epoxy work surface with stainless steel leg inserts, wood and painted steel bench shelving with front seismic rods, Research Collection full-overlay style mobile cabinets, ceiling service panels.

06

Enterprise single sided bench system with pre-wired electric outlets, task lights, pre-piped service fixtures, adjustable height phenolic work surface, phenolic and painted steel bench shelving with front seismic rods, Research Collection wood on steel, full-overlay style mobile cabinets.

07

Enterprise shared bench system with pre-wired electric outlets, pre-piped service fixtures, adjustable height Kemresin epoxy work surface, wood bench shelving, and Signature Series wood full-overlay style mobile cabinets.





06



07



09

08

Enterprise single-sided bench system with pre-wired electric outlets, task lights, pre-piped service fixtures, adjustable-height Kemresin epoxy work surface, painted steel bench shelving, Signature Series wood full-overlay style suspended cabinets.

09

Enterprise single-sided bench system with pre-wired electric outlets, pre-piped service fixtures, adjustable height Kemresin epoxy work surface, painted steel shelving with painted steel shelf lips, Research Collection overlay - wood on steel style suspended cabinets, and ceiling service panels.

THE EVOLUTION SYSTEM



FEATURES:

- >> Infinitely height adjustable work surfaces and shelving
- >> Starter and add-on assemblies; single and double-sided
- >> Laminates, edge-grain maple, phenolic resin and Kemresin worksurfaces available
- >> UL listed, column mount power bars with power switch and built-in circuit breaker
- >> Power, data, and service fixtures mountable in columns
- >> Pre-wired and pre-piped options
- >> Storage options include:
 - > Mobile
 - > Suspended
 - > Freestanding
 - > Overhead



- >> SEFA 10, Adaptable Casework Systems
- >> Class 7 Standards
- >> Class 8 Mobile Standards





01



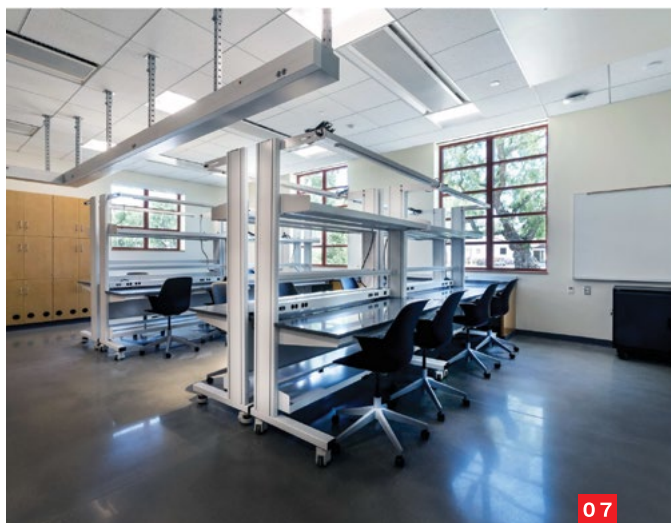
02



04



05



01

Evolution 12" double-sided column on levelers, cantilevered adjustable height work surface framing, Research Collection inset style suspended cabinets, painted steel shelving, Kemresin epoxy work surface, and overhead service carriers. Accessories include column mounted pre-wired integral electric outlets.

02

Evolution 12" double-sided column on leveling casters, cantilevered adjustable height work surface framing, Research Collection full-overlay style mobile cabinets, painted steel shelving, FE50 end 4-leg adjustable height tables, Kemresin epoxy work surface, and overhead ceiling service panels. Accessories include column mounted pre-wired FV50 raceways and column mounted pre-piped service fixtures.

03

Evolution 12" double-sided column on levelers, cantilevered adjustable height work surface framing, Research Collection inset style suspended cabinets, painted steel shelving, Kemresin epoxy work surface, and overhead service carriers. Accessories include column mounted pre-wired integral electric outlets.

04

Evolution heavy-duty 9" single-sided carts on leveling casters, cantilevered adjustable-height work surface framing, Kemresin epoxy work surface, and painted steel shelving. Accessories include column mounted pre-wired FV50 raceways, and overhead task light system. Overhead electrical raceway by others.

05

Evolution single sided Adjustabench on leveling casters, motorized adjustable height work surface, Research Collection wood fronted full-overlay style suspended cabinets, painted steel shelving, Kemresin epoxy work surface, and overhead service carrier. Accessories include column mounted pre-wired FV50 raceways and column mounted pre-piped service fixtures.

06

Evolution single-sided column workstations, with height adjustable Kemresin epoxy resin work surface. These benches include pre-wired electric and pre-plumbed services on the columns. Also included are mobile, overlay wood-on-steel style cabinets.

07

Evolution single-sided column workstations, with height adjustable Kemresin epoxy resin work surface. These benches have adjustable power bars and task lights, as well as shelving above and below the work surface.

08

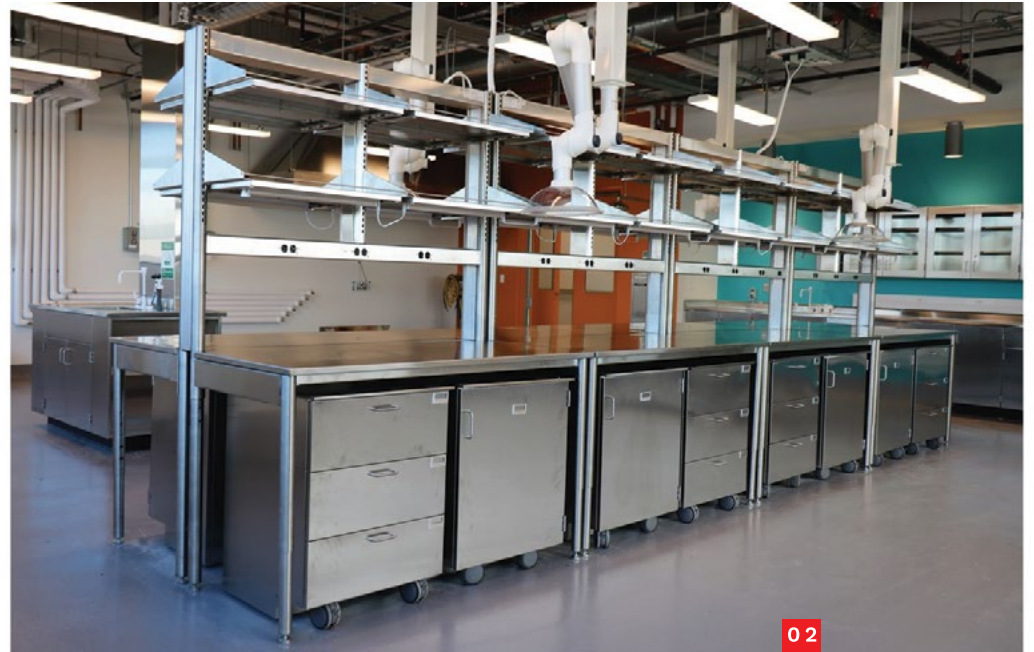
Evolution 12" double-sided column on leveling casters, cantilevered adjustable height work surface framing, Research Collection inset style mobile cabinets, painted steel shelving, FC50 end 4-leg adjustable-height tables, Kemresin epoxy work surface, and overhead ceiling service panels. Accessories include column mounted pre-wired electrical outlets.

STAINLESS STEEL





01
Research Collection inset style stainless steel base cabinets and work surface with integrally welded backsplash. Wall mounted stainless shelves with stainless wall panes complete this work area.



02
Stainless steel Enterprise shared frame bench system with pre-wired electric outlets, task lighting, adjustable-height stainless steel bench work surface shelving, Research Collection full-overlay style stainless steel mobile cabinets with label holders.



03
Research Collection full-overlay style stainless steel base and upper wall cabinets, stainless steel work surface with integrally welded backsplash and sink assembly.

SPEKTRUM LAMINATE

Spektrum laminate is an option rich product with choices in color solids, patterns and wood grains. Easy to clean with numerous hardware options and a separately applied plywood base.

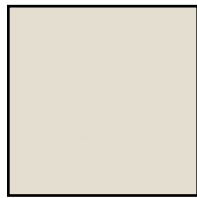
Spektrum laminate is also available with chemical resistant properties. The 9-ply plywood drawers with dovetail joinery incorporates a chemical resistant finish to match the interior of the cabinet.

For color charts see page 60.

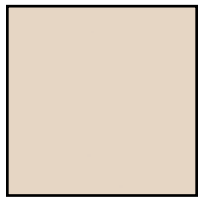




LAMINATE COLORS



1503-60
Putty



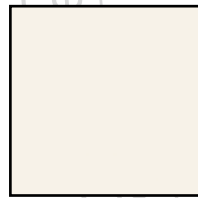
1530-60
Beige



1531-60
Light Beige



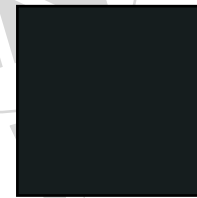
1570-60
White



1572-60
Antique White



1573-60
Frosty White



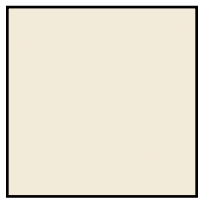
1595-60
Black



D14-60
Port



D25-60
Atlantis



D30-60
Natural Almond



D50-60
Khaki Brown



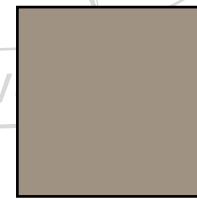
D90-60
North Sea



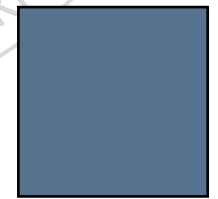
D91-60
Slate Grey



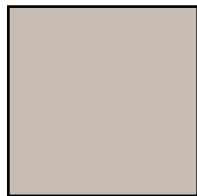
D92-60
Dove Grey



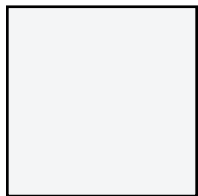
D96-60
Shadow



D321-60
Brittany Blue



D327-60
Pepperdust



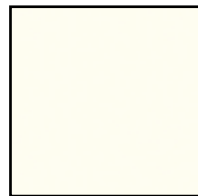
D354-60
Designer White



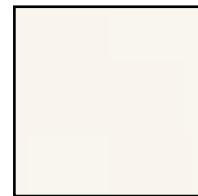
D379-60
Indigo



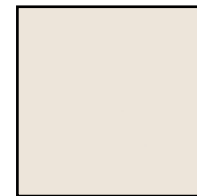
D381-60
Fashion Grey



D427-60
Linen



D431-60
Alabaster



D439-60
Wallaby



D495-60
Coffee Bean



4143-60
Neutral Glace



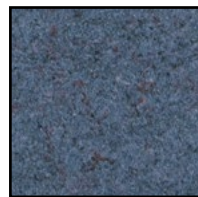
4621-60
White Nebula



4622-60
Grey Nebula



4623-60
Graphite Nebula



4651-60
Navy Legacy



4656-60
Bronze Legacy



4663-60
Tawny Legacy

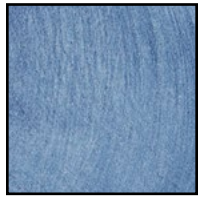


4669-60
Natural Tigris

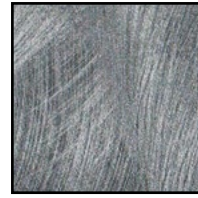
LAMINATE COLORS



4674-60
Evening Tigris



4746-60
Woolamai Brush



4779-60
Pewter Brush



4783-60
White Tigris



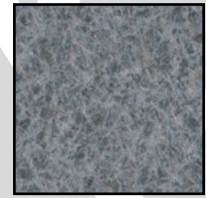
4794-60
Windswept Bronze



4795-60
Windswept Pewter



4796-60
Burnished Chestnut



4820-60
Carbon EV



4841-60
Desert Zephyr



4842-60
Canyon Zephyr



4843-60
Misted Zephyr



4845-60
Twilight Zephyr



4846-60
Morro Zephyr



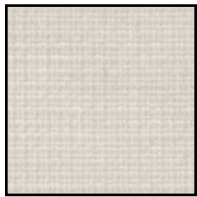
4856-60
Cloud Zephyr



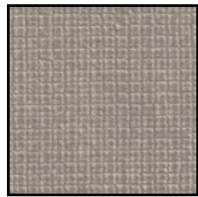
4857-60
Shadow Zephyr



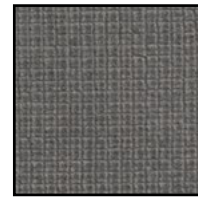
4876-38
Sheer Mesh



4877-38
Grey Mesh



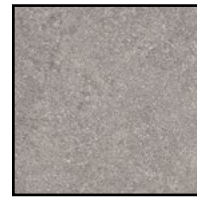
4878-38
Pewter Mesh



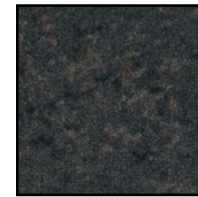
4879-38
Steel Mesh



4880-38
Carbon Mesh



4886-38
Pearl Soapstone



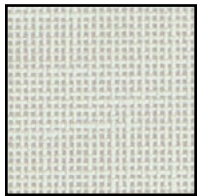
4888-38
Rustic Slate



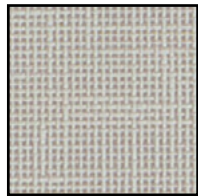
4911-38
Soft Gold Mesh



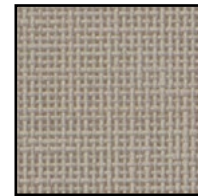
4915-60
Tangerine



4942-38
Crisp Linen



4943-38
Classic Linen



4943-38
Casual Linen



4946-38
Natural Cotton



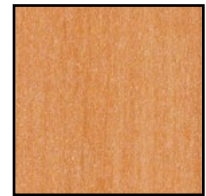
4947-38
Raw Cotton



D12-60
Regimental Red



7054-60
Wild Cherry



7061-60
Natural Pear

LAMINATE COLORS



7806-60
Banister Oak



7816-60
Solar Oak



7909-60
Fusion Maple



7911-60
Manitoba Maple



7921-38
Tuscan Walnut



7925-38
Monticello Maple



7928-38
Castle Oak



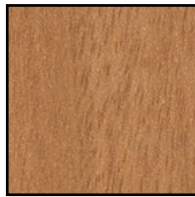
7929-38
Huntington Maple



7937-38
River Cherry



7938-38
New Age Oak



7946-38
Brazilwood



7953-38
Harvest Maple



7954-38
Natural Rift



7983-38
Boardwalk Oak



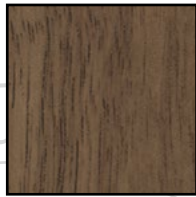
7984-38
Magalore Mango



7990-38
Mission Maple



7991-38
NeoWalnut



7992-38
Pinnacle Walnut



7993-38
Florence Walnut



7996-38
Natural Recon



10734-60
Limber Maple



10745-60
Fonthill Pear

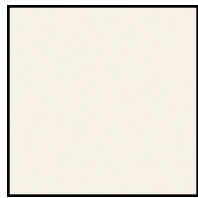


10776-60
Kensington Maple

LAMINATE COLORS



459-58
Brite White



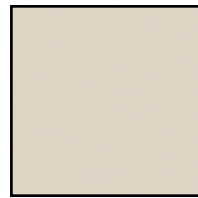
463-58
Sail White



845-58
Spectrum Red



851-58
Spectrum Blue



858-58
Pumice



902-58
Platinum



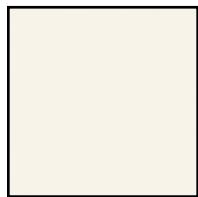
912-58
Storm



918-58
Neutral White



923-58
Surf



932-58
Antique White



933-58
Mission White



934-58
Pearl



949-58
White



961-58
Fog



969-58
Navy Blue



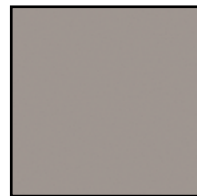
1097-58
Citadel



2200-58
Dark Chocolate



2297-58
Terril



2770-58
Sarum Grey



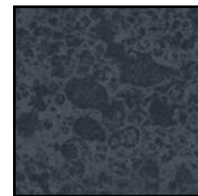
5342-58
Earth



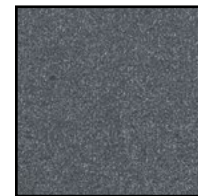
6901-58
Vibrant Green



7197-58
Dover White



299-58
Ebony Oxide



3505-58
Storm Solidz



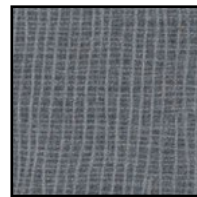
5875-58
Neutral Weft



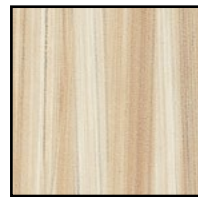
5880-58
Earthen Warp



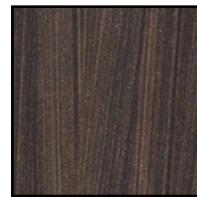
5881-58
Chocolate Warp



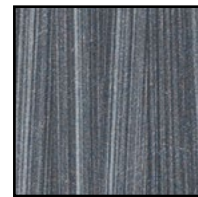
5882-58
Citadel Warp



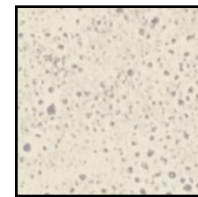
6212-58
Wheat Strand



6306-58
Wenge Strand



6307-58
Burnt Strand



6920-58
Mineral Spa

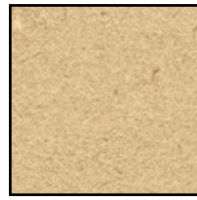
LAMINATE COLORS



7022-58
Natural Canvas



7708-58
Flax Gauze



7813-58
Cardboard Solidz



8826-58
Neutral Twill



8827-58
Sarum Twill



8828-58
Earthen Twill



8829-58
Graphite Twill



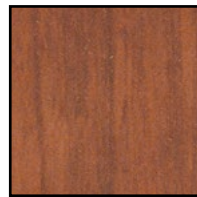
204-58
Butcherblock Maple



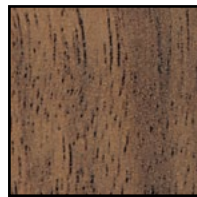
346-58
Natural Oak



756-58
Natural Maple



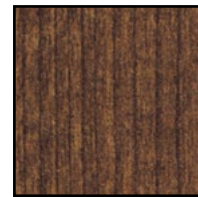
758-58
Blossom Cherrywood



3485-58
Black Walnut



5883-58
Pecan Woodline



5886-43
Sorrel Cherry



5904-43
Wild Cherry



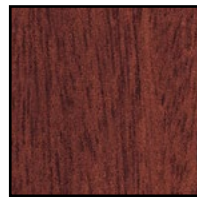
6206-43
Planked Deluxe Pear



6208-43
Glamour Cherry



6209-43
Prestige Walnut



7008-43
Acajou Mahogany



7012-58
Amber Maple



7288-58
Ginger Root Maple



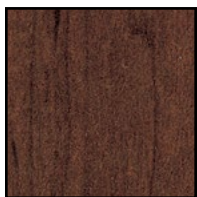
7481-58
Natural Birch



7484-58
Cherry Birch



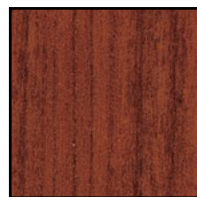
7738-58
Cognac Maple



7739-58
Cocoa Maple



7747-58
Pencil Wood



7759-43
Select Cherry



8845-58
Bleached Legno

METAL COLORS



12
Black



463
Iron Ore



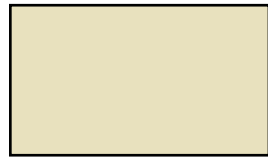
242
Flint Grey



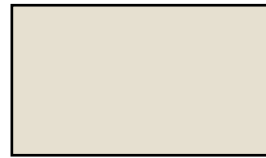
85
Satin Grey



94
True Blue



20
Sand Tan



61
Light Neutral



78
Snow White



103
Smokey Blue



90
Amazon



102
Agave



104
Sage



87
Mountain Blue



62
Driftwood



97
Invigorate

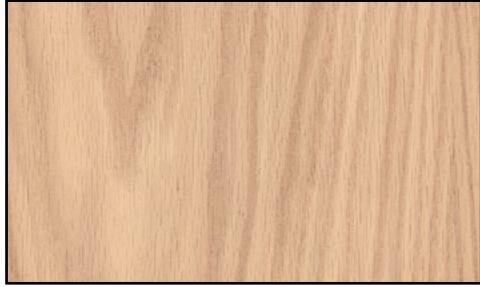


99
Rapture Red

WOOD COLORS

WHITE MAPLE VENEERS

RED OAK VENEERS



102
Seaside Oak



103
Sherwood Oak



104
Woodland Oak



201
Natural Maple



108
Winchester Oak



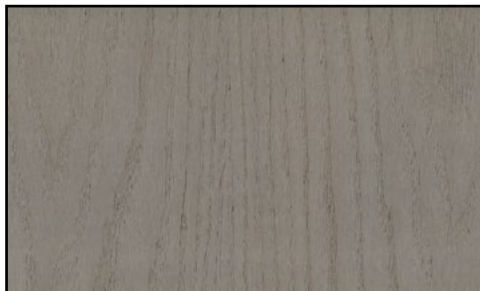
109
Chicory Oak



110
Carolina Oak



204
Woodland Maple



111
Barnwood Oak



209
Chicory Maple

STEAMED BEECH VENEERS



202
Seaside Maple



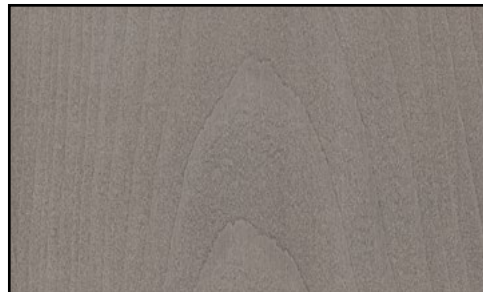
608
Winchester Beech



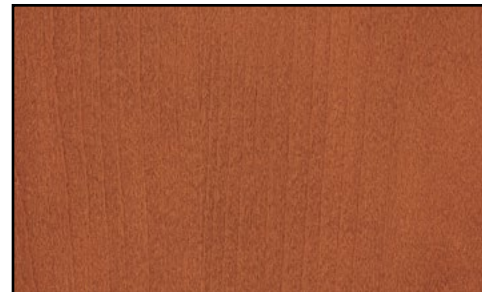
609
Chicory Beech



208
Winchester Maple



611
Barnwood Beech



610
Carolina Beech



210
Carolina Maple

EST

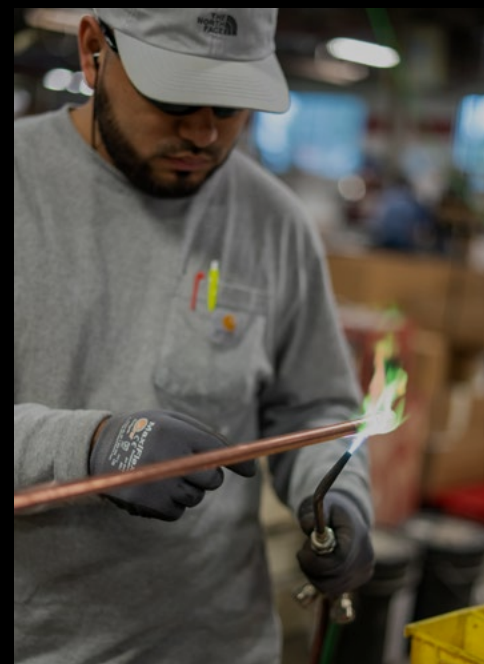
ABOUT KEWAUNEE

Kewaunee laboratory furniture was built to catalyze the next big discovery.

A North Carolina based company founded in 1906, Kewaunee's history of quality products and scientific expertise positions it as a recognized global leader in the design, manufacture, and installation of laboratory, healthcare, and technical furniture products. Products include steel, wood, and laminate casework, fume hoods, adaptable modular systems, movable workstations, stand-alone benches, biological safety cabinets, and epoxy resin worksurfaces and sinks. Kewaunee's corporate headquarters are located in Statesville, North Carolina.



STATESVILLE, NC



FROM START TO FINISH

The partnership between dealers, distributors and Kewaunee provides Total Laboratory Solutions from start to finish. Whether your project is a brand new multi-story research center or the remodel of an existing lab, you are provided the full range of services from design and engineering to the final installation and start-up.



Visit www.kewaunee.com to find a representative near you.

- >> Design
- >> Engineering
- >> Fabrication
- >> Testing
- >> Certification
- >> Project management
- >> Installation
- >> Commissioning

